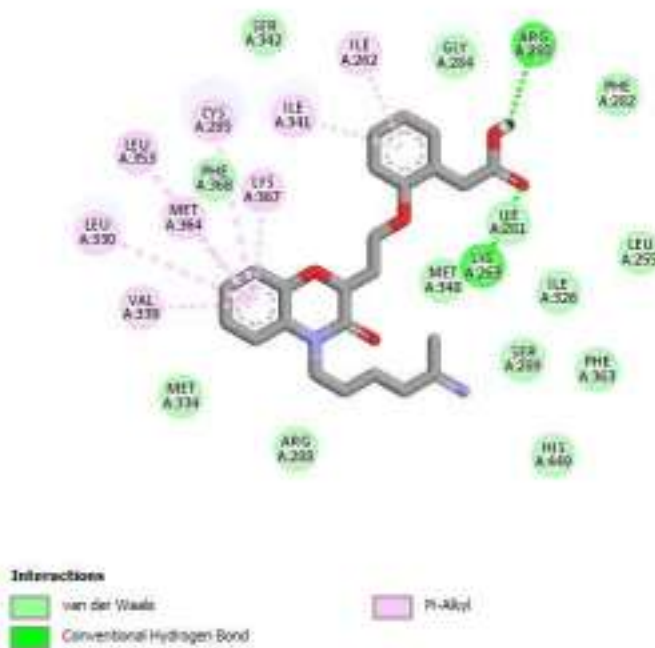


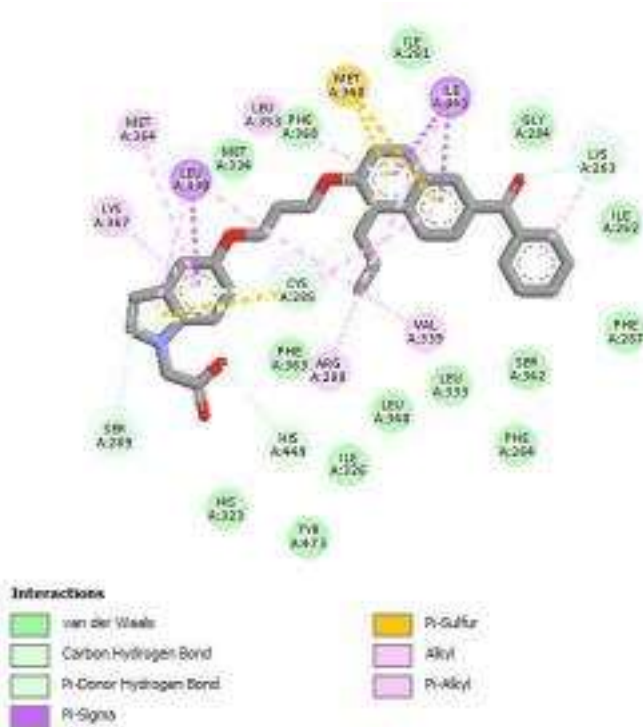
Lampiran 1. 1 Gambar Visualisasi Interaksi Hasil Docking dan Tabel Interaksi Hasil Docking Senyawa Uji 1



Ligan Uji	Interaksi	Residu Asam Amino
senyawa 1	Hidrogen : A:LYS263:NZ - d:RES1:O29 A:LYS301:NZ - C:LEU693:O C:LYS688:N - A:GLU471:OE2 C:ILE689:N - A:GLU471:OE2 C:LEU690:N - A:GLU471:OE1	ILE262, LYS263, ARG280, CYS285, LEU330, VAL339,

d:RES1:H48 - A:ARG280:O ILE341,
Pi-Sigma : A:VAL315:CG2 - LEU353,
C:HIS691 MET364, dan
Alkil : A:VAL315 - C:LEU690 LYS367
A:LEU318 - C:LEU690 A:LEU318 -
C:LEU694
A:LEU468 - C:ILE689
Pi-Alkil : C:HIS687 -
A:VAL315
C:HIS687 - A:LYS319
C:HIS691 - A:LEU311
d:RES1 - A:CYS285
d:RES1 - A:LEU330
d:RES1 - A:VAL339
d:RES1 - A:LEU353
d:RES1 - A:MET364
d:RES1 - A:LYS367
d:RES1 - A:ILE262
d:RES1 - A:ILE341

Lampiran 1. 2 Gambar Visualisasi Interaksi Hasil Docking dan Tabel Interaksi Hasil Docking Senyawa Uji 2

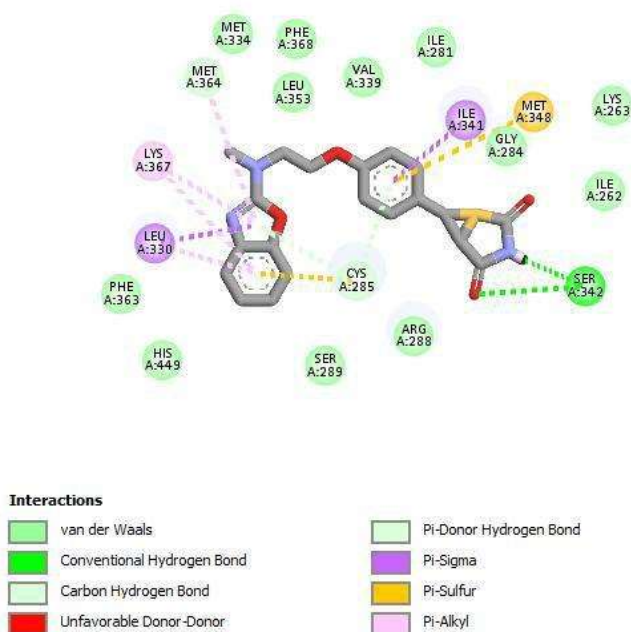


Ligan Uji	Interaksi	Residu Asam Amino
senyawa 2	Hidrogen : A:LYS301:NZ - C:LEU693:O C:LYS688:N - A:GLU471:OE2 C:ILE689:N - A:GLU471:OE2 C:LEU690:N - A:GLU471:OE1	ARG288, LEU330, VAL339, ILE341, MET348,

Pi-Sigma : A:VAL315:CG2 - LEU353,
C:HIS691 MET364, dan
A:LEU330:CD1 - d:RES1 LYS367
A:ILE341:CG2 - d:RES1 A:ILE341:CG2 -
d:RES1 Pi-Sulfur : A:CYS285:SG -

d:RES1
A:MET348:SD - d:RES1
A:MET348:SD - d:RES1
Alkil : A:VAL315 - C:LEU690
A:LEU318 - C:LEU690
A:LEU318 - C:LEU694
A:LEU468 - C:ILE689
d:RES1:C20 - A:ARG288
d:RES1:C20 - A:LEU330
d:RES1:C20 - A:VAL339
d:RES1:C20 - A:ILE341
Pi-Alkil : C:HIS687 -
A:VAL315
C:HIS687 - A:LYS319
C:HIS691 - A:LEU311
d:RES1 - A:CYS285
d:RES1 - A:LEU353
d:RES1 - A:MET364
d:RES1 - A:LYS367
d:RES1 - A:LEU330
d:RES1 - A:LYS263

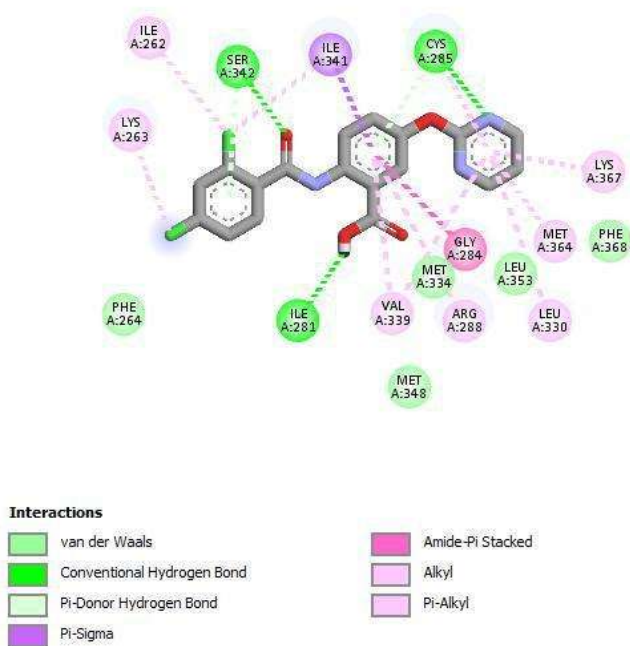
Lampiran 1. 3 Gambar Visualisasi Interaksi Hasil Docking dan Tabel Interaksi Hasil Docking Senyawa Uji 3



Ligan Uji	Interaksi	Residu Asam Amino
senyawa 3	Hidrogen : A:LYS301:NZ - C:LEU693:O A:SER342:N - d:RES1:O28 C:LYS688:N - A:GLU471:OE2	LEU330, ILE341, SER342, MET348, dan

C:ILE689:N - A:GLU471:OE2 LYS367
C:LEU690:N - A:GLU471:OE1
d:RES1:H44 - A:SER342:OG Pi-Sigma :
A:VAL315:CG2 -
C:HIS691
A:LEU330:CD1 - d:RES1
A:ILE341:CG2 - d:RES1
Pi-Sulfur : A:CYS285:SG -
d:RES1
A:MET348:SD - d:RES1
Alkil : A:VAL315 - C:LEU690
A:LEU318 - C:LEU690
A:LEU318 - C:LEU694
A:LEU468 - C:ILE689
Pi-Alkil : A:MET364 - d:RES1
A:LYS367 - d:RES1
C:HIS687 - A:VAL315
C:HIS687 - A:LYS319
C:HIS691 - A:LEU311
d:RES1 - A:LEU330
d:RES1 - A:LYS367

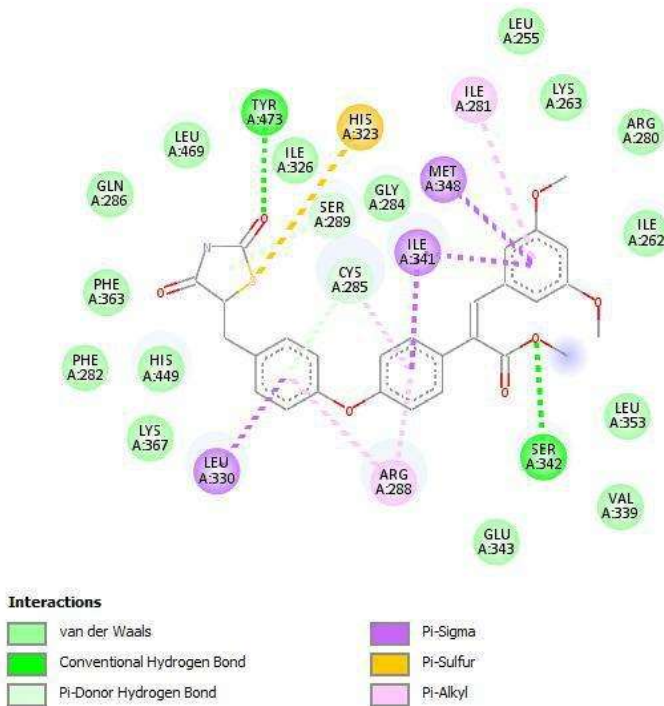
Lampiran 1. 4 Gambar Visualisasi Interaksi Hasil Docking dan Tabel Interaksi Hasil Docking Senyawa Uji 4



Ligan Uji	Interaksi	Residu Asam Amino
senyaw 4	Hidrogen : A:CYS285:SG - d:RES1:N23 A:LYS301:NZ - C:LEU693:O A:SER342:N - d:RES1:O11 C:LYS688:N - A:GLU471:OE2	ILE262, LYS263, ILE281, CYS285, GLY284,

C:ILE689:N - A:GLU471:OE2 ARG288,
C:LEU690:N - A:GLU471:OE1 LEU330,
d:RES1:H35 - A:ILE281:O VAL339,
Pi-Sigma : A:VAL315:CG2 - ILE341,
C:HIS691 SER342,
A:ILE341:CG2 - d:RES1 MET364, dan
Alkil : A:VAL315 - C:LEU690 LYS367
A:LEU318 - C:LEU690
A:LEU318 - C:LEU694
A:LEU468 - C:ILE689
d:RES1:CI7 - A:LYS263
d:RES1:CI8 - A:ILE262
d:RES1:CI8 - A:ILE341
Pi-Alkil : C:HIS687 -
A:VAL315
C:HIS687 - A:LYS319
C:HIS691 - A:LEU311
d:RES1 - A:ARG288
d:RES1 - A:VAL339
d:RES1 - A:CYS285
d:RES1 - A:LEU330
d:RES1 - A:VAL339
d:RES1 - A:MET364
d:RES1 - A:LYS367

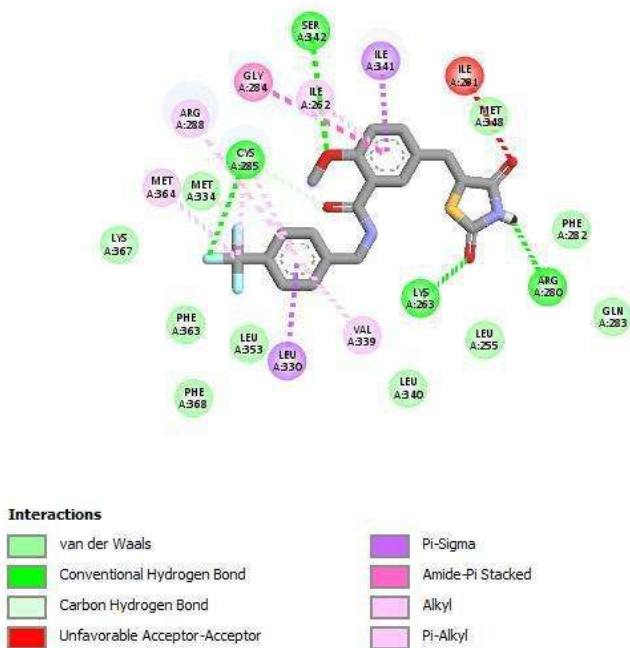
Lampiran 1. 5 Gambar Visualisasi Interaksi Hasil Docking dan Tabel Interaksi Hasil Docking Senyawa Uji 5



Ligan Uji	Interaksi	Residu Asam Amino
senyaw	Hidrogen : A:LYS301:NZ -	ILE281,
5	C:LEU693:O	ARG288,
	A:SER342:OG - d:RES1:O14	HIS323,
	A:TYR473:OH - d:RES1:O36	LEU330,
	C:LYS688:N - A:GLU471:OE2	ILE341,

C:ILE689:N - A:GLU471:OE2 SER342,
C:LEU690:N - A:GLU471:OE1 MET348, dan
Pi-Sigma : A:VAL315:CG2 - TYR473
C:HIS691
A:LEU330:CD1 - d:RES1
A:ILE341:CG2 - d:RES1
A:ILE341:CD1 - d:RES1
A:MET348:CE - d:RES1
Pi-Sulfur : d:RES1:S35 -
A:HIS323
Alkil : A:VAL315 - C:LEU690
A:LEU318 - C:LEU690
A:LEU318 - C:LEU694
A:LEU468 - C:ILE689
Pi-Alkil : C:HIS687 -
A:VAL315
C:HIS687 - A:LYS319
C:HIS691 - A:LEU311
d:RES1 - A:CYS285
d:RES1 - A:ARG288
d:RES1 - A:ILE281
d:RES1 - A:ARG288

Lampiran 1. 6 Gambar Visualisasi Interaksi Hasil Docking dan Tabel Interaksi Hasil Docking Senyawa Uji 6

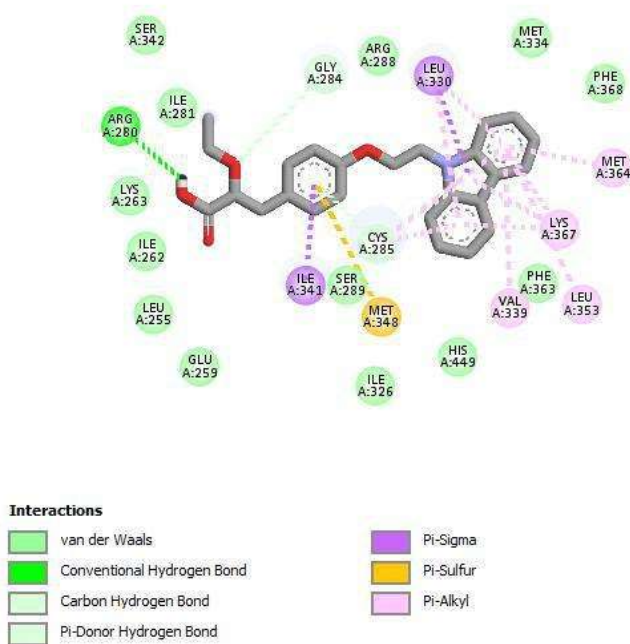


Ligan Uji	Interaksi	Residu Asam Amino
senyawa 6	Hidrogen : A:LYS263:NZ - d:RES1:O30 A:CYS285:SG - d:RES1:F4 A:LYS301:NZ - C:LEU693:O A:SER342:N - d:RES1:O23	ILE262, LYS263, GLY284, CYS285, ARG280,

C:LYS688:N - A:GLU471:OE2 ARG288,
C:ILE689:N - A:GLU471:OE2 LEU330,
C:LEU690:N - A:GLU471:OE1 VAL339,
d:RES1:H47 - A:ARG280:O ILE341,
Pi-Sigma : A:VAL315:CG2 - SER342, dan
C:HIS691 MET364 A:LEU330:CD2 -
d:RES1 A:ILE341:CD1 - d:RES1

Alkil : A:VAL315 - C:LEU690
A:LEU318 - C:LEU690
A:LEU318 - C:LEU694
A:LEU468 - C:ILE689
d:RES1:C1 - A:CYS285
d:RES1:C1 - A:MET364
Pi-Alkil : C:HIS687 -
A:VAL315
C:HIS687 - A:LYS319
C:HIS691 - A:LEU311
d:RES1 - A:ILE262
d:RES1 - A:CYS285
d:RES1 - A:ARG288
d:RES1 - A:VAL339

Lampiran 1. 7 Gambar Visualisasi Interaksi Hasil Docking dan Tabel Interaksi Hasil Docking Senyawa Uji 7

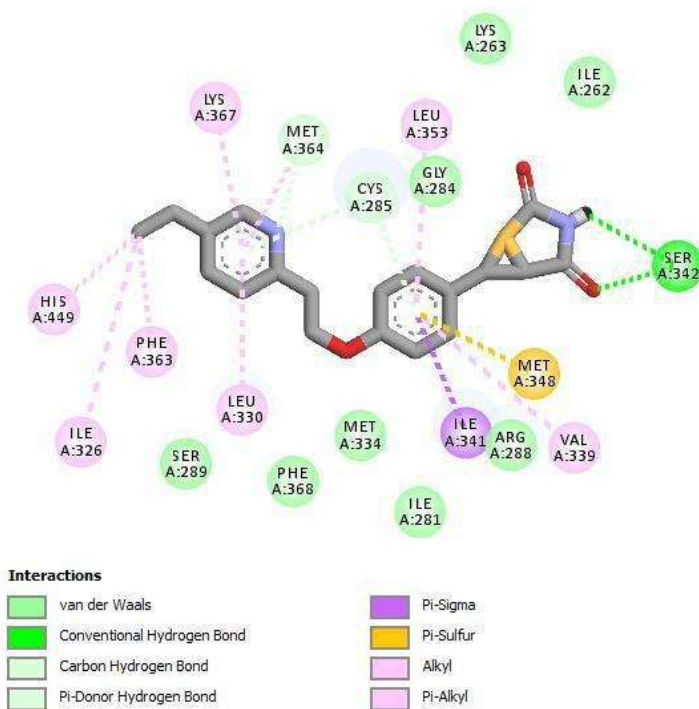


Ligan Uji	Interaksi	Residu Asam Amino
senyawa uji 7	Hidrogen : A:LYS301:NZ - C:LEU693:O	ARG280, LEU330,
	C:LYS688:N - A:GLU471:OE2	VAL339,
	C:ILE689:N - A:GLU471:OE2	ILE341,
	C:LEU690:N - A:GLU471:OE1	MET348,

d:RES1:H50 - A:ARG280:O LEU353,
Pi-Sigma : A:VAL315:CG2 - MET364, dan
C:HIS691 LYS367 A:LEU330:CD1 -
d:RES1 A:ILE341:CG2 - d:RES1 Pi-Sulfur
: A:MET348:SD -

d:RES1
Alkil : A:VAL315 - C:LEU690
A:LEU318 - C:LEU690
A:LEU318 - C:LEU694
A:LEU468 - C:ILE689
PI-Alkil : C:HIS687 -
A:VAL315
C:HIS687 - A:LYS319
C:HIS691 - A:LEU311
d:RES1 - A:LYS367
d:RES1 - A:CYS285
d:RES1 - A:LEU330
d:RES1 - A:LYS367
d:RES1 - A:CYS285
d:RES1 - A:LEU330
d:RES1 - A:VAL339
d:RES1 - A:LEU353
d:RES1 - A:MET364
d:RES1 - A:LYS367

Lampiran 1. 8 Gambar Visualisasi Interaksi Hasil Docking dan Tabel Interaksi Hasil Docking Senyawa Uji 8

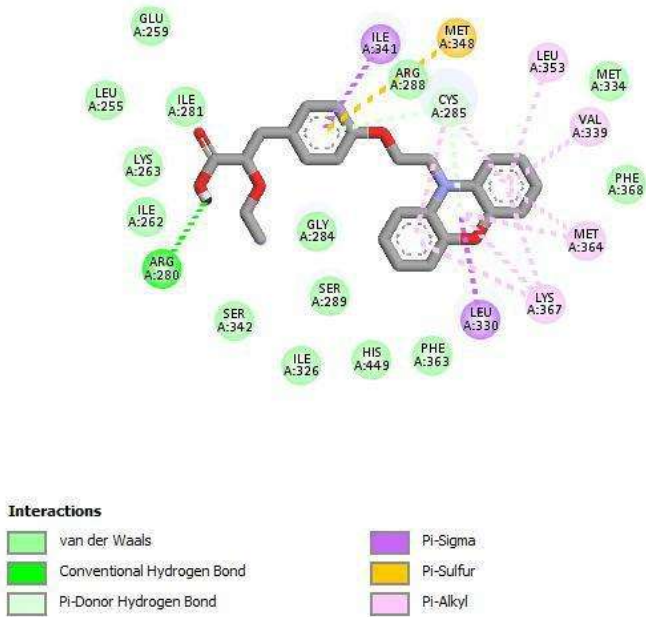


Ligan Uji	Interaksi	Residu Asam Amino
senyawa 8	Hidrogen : A:LYS301:NZ - C:LEU693:O A:SER342:N - d:RES1:O24 C:LYS688:N - A:GLU471:OE2 C:ILE689:N - A:GLU471:OE2	ILE326, LEU330, VAL339, ILE341, SER342,

C:LEU690:N - A:GLU471:OE1 MET348,
d:RES1:H45 - A:SER342:OG LEU353,
Pi-Sigma : A:VAL315:CG2 - PHE363,
C:HIS691 LYS367, dan
A:ILE341:CG2 - d:RES1 HIS449 Pi-Sulfur
: A:MET348:SD - d:RES1

Alkil : A:VAL315 - C:LEU690
A:LEU318 - C:LEU690
A:LEU318 - C:LEU694
A:LEU468 - C:ILE689
d:RES1:C1 - A:ILE326
Pi-Alkil : A:PHE363 -
d:RES1:C1
A:HIS449 - d:RES1:C1
C:HIS687 - A:VAL315
C:HIS687 - A:LYS319
C:HIS691 - A:LEU311
d:RES1 - A:VAL339
d:RES1 - A:LEU353
d:RES1 - A:LEU330
d:RES1 - A:MET364
d:RES1 - A:LYS367

Lampiran 1. 9 Gambar Visualisasi Interaksi Hasil Docking dan Tabel Interaksi Hasil Docking Senyawa Uji 9

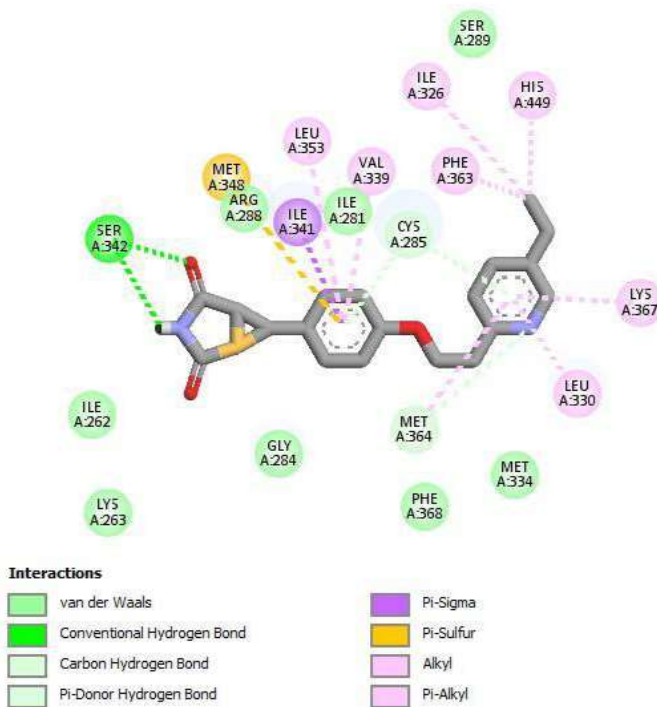


Ligan Uji	Interaksi	Residu Asam Amino
senyawa 9	Hidrogen : A:LYS301:NZ - C:LEU693:O	ARG280, LEU330,
	C:LYS688:N - A:GLU471:OE2	VAL339,
	C:ILE689:N - A:GLU471:OE2	ILE341,
	C:LEU690:N - A:GLU471:OE1	MET348,

d:RES1:H51 - A:ARG280:O LEU353,
Pi-Sigma : A:VAL315:CG2 - MET364, dan
C:HIS691 LYS367 A:LEU330:CD1 -
d:RES1 A:ILE341:CG2 - d:RES1 Pi-Sulfur
: A:MET348:SD -

d:RES1
Alkil : A:VAL315 - C:LEU690
A:LEU318 - C:LEU690
A:LEU318 - C:LEU694
A:LEU468 - C:ILE689
Pi-Alkil : C:HIS687 -
A:VAL315
C:HIS687 - A:LYS319
C:HIS691 - A:LEU311
d:RES1 - A:MET364
d:RES1 - A:LYS367
d:RES1 - A:CYS285
d:RES1 - A:LYS367
d:RES1 - A:CYS285
d:RES1 - A:VAL339
d:RES1 - A:LEU353
d:RES1 - A:MET364
d:RES1 - A:LYS367

Lampiran 1. 10 Gambar Visualisasi Interaksi Hasil Docking dan Tabel Interaksi Hasil Docking Senyawa Uji 10

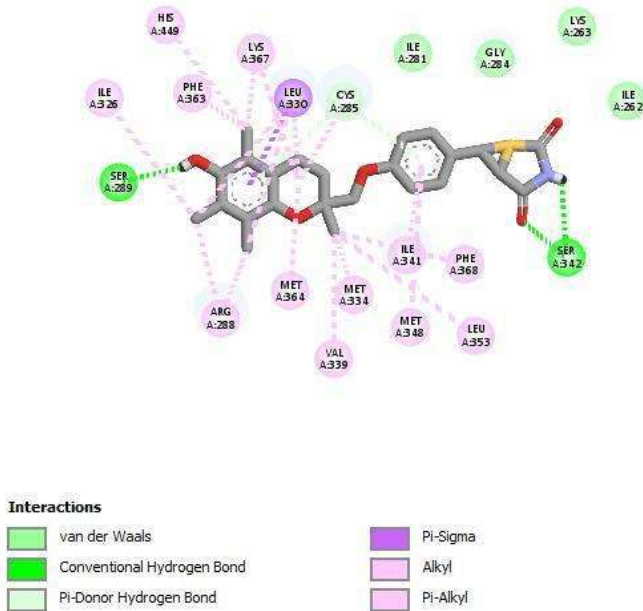


Ligan Uji	Interaksi	Residu Asam Amino
senyawa 10	Hidrogen : A:LYS301:NZ - C:LEU693:O A:SER342:N - d:RES1:O24 C:LYS688:N - A:GLU471:OE2 C:ILE689:N - A:GLU471:OE2	ILE326, LEU330, VAL339, ILE341, SER342,

C:LEU690:N - A:GLU471:OE1 MET348,
d:RES1:H45 - A:SER342:OG LEU353,
Pi-Sigma : A:VAL315:CG2 - PHE363,
C:HIS691 LYS367, dan
A:ILE341:CG2 - d:RES1 HIS449 Pi-Sulfur
: A:MET348:SD - d:RES1

Alkil : A:VAL315 - C:LEU690
A:LEU318 - C:LEU690
A:LEU318 - C:LEU694
A:LEU468 - C:ILE689
d:RES1:C1 - A:ILE326
Pi-Alkil : A:PHE363 -
d:RES1:C1
A:HIS449 - d:RES1:C1
C:HIS687 - A:VAL315
C:HIS687 - A:LYS319
C:HIS691 - A:LEU311
d:RES1 - A:VAL339
d:RES1 - A:LEU353
d:RES1 - A:LEU330
d:RES1 - A:MET364
d:RES1 - A:LYS367

Lampiran 1. 11 Gambar Visualisasi Interaksi Hasil Docking dan Tabel Interaksi Hasil Docking Senyawa 11



Ligan Uji	Interaksi	Residu Asam Amino
senyawa 11	Hidrogen : A:LYS301:NZ - C:LEU693:O A:SER342:N - d:RES1:O30 C:LYS688:N - A:GLU471:OE2 C:ILE689:N - A:GLU471:OE2	ARG288, SER289, ILE326, LEU330, MET334,

C:LEU690:N - A:GLU471:OE1 VAL339,
d:RES1:H35 - A:SER289:OG ILE341,
d:RES1:H58 - A:SER342:OG SER342,
Pi-Sigma : A:VAL315:CG2 - MET348,
C:HIS691 LEU353,
A:LEU330:CD1 - d:RES1 PHE363,
Alkil : A:CYS285 - d:RES1 MET364,
A:VAL315 - C:LEU690 LYS367,
A:LEU318 - C:LEU690 PHE368, dan
A:LEU318 - C:LEU694 HIS449
A:LEU330 - d:RES1
A:MET364 - d:RES1
A:LYS367 - d:RES1
A:LEU468 - C:ILE689
d:RES1:C9 - A:LYS367
d:RES1:C7 - A:ARG288
d:RES1:C7 - A:ILE326
d:RES1:C7 - A:LEU330
d:RES1:C10 - A:ARG288
d:RES1:C10 - A:LEU330
d:RES1:C18 - A:MET334
d:RES1:C18 - A:VAL339
d:RES1:C18 - A:LEU353
Pi-Alkil : A:PHE363 -
d:RES1:C9
A:PHE368 - d:RES1:C18
A:HIS449 - d:RES1:C9

C:HIS687 - A:VAL315

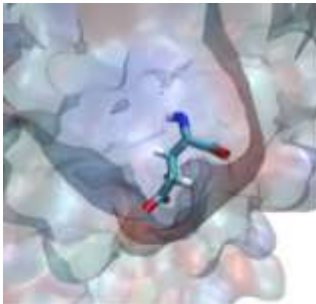
C:HIS687 - A:LYS319

C:HIS691 - A:LEU311

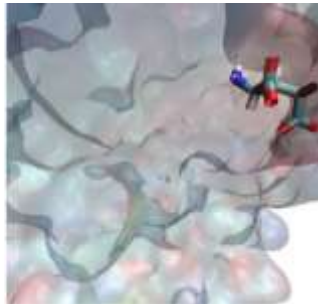
d:RES1 - A:ILE341

d:RES1 - A:MET348

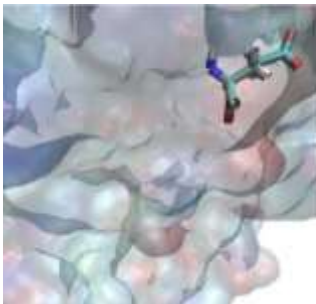
Lampiran 2. 1 Visualisasi Molekular Dinamik Senyawa Alami



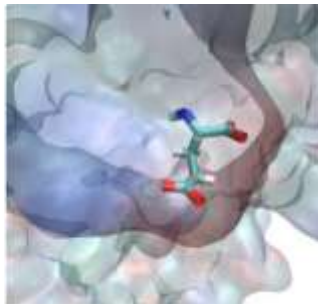
(0 nanodetik)



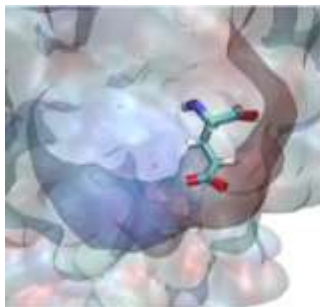
(10 nanodetik)



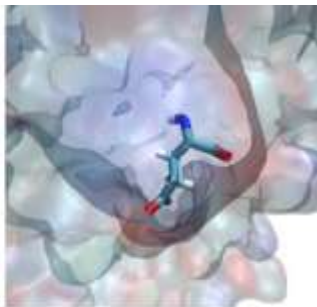
(20 nanodetik)



(30 nanodetik)

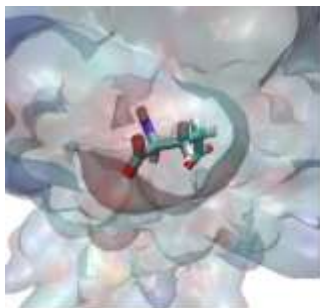


(40 nanodetik)

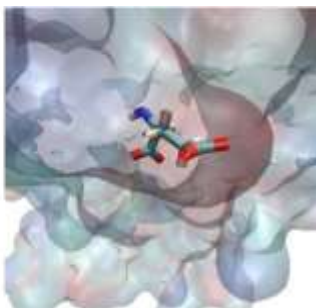


(50 nanodetik)

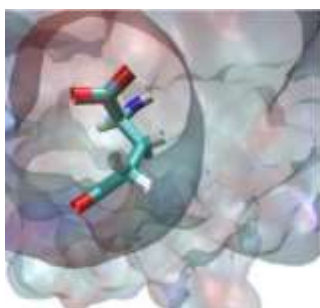
Lampiran 2. 2 Visualisasi Molekular Dinamik Senyawa uji 2



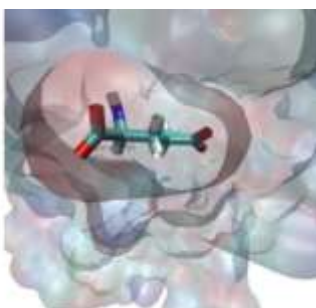
(0 nanodetik)



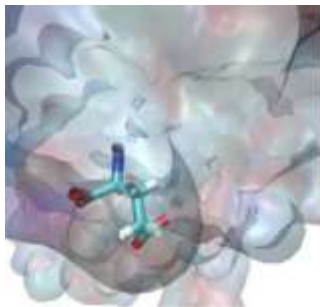
(10 nanodetik)



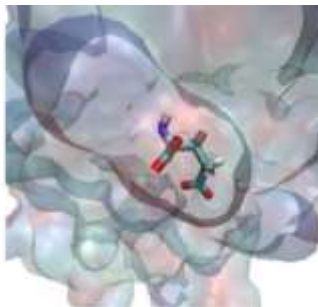
(20 nanodetik)



(30 nanodetik)

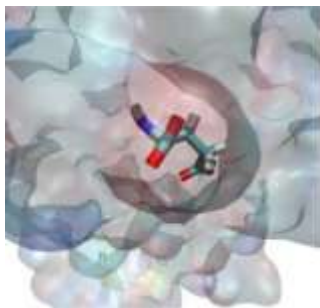


(40 nanodetik)

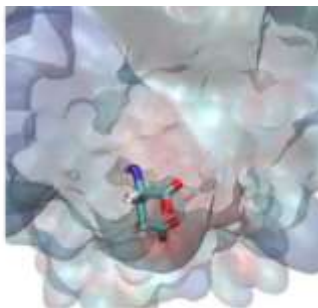


(50 nanodetik)

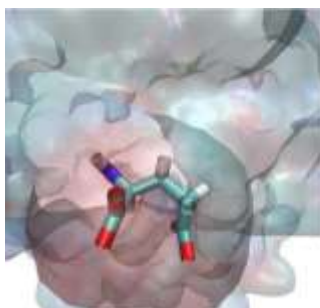
Lampiran 2. 3 Visualisasi Molekular Dinamik Senyawa uji 5



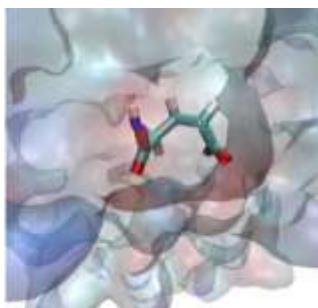
(0 nanodetik)



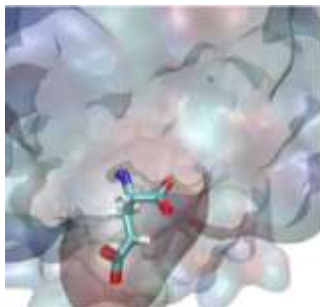
(10 nanodetik)



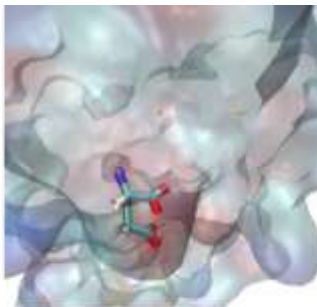
(20 nanodetik)



(30 nanodetik)

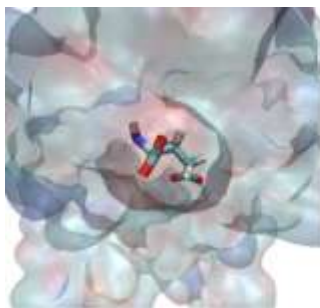


(40 nanodetik)

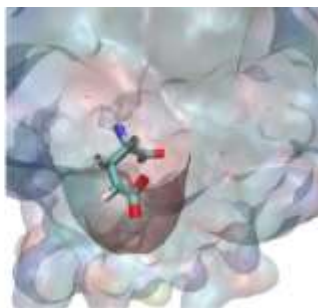


(50 nanodetik)

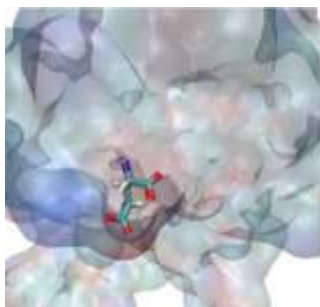
Lampiran 2. 4 Visualisasi Molekular Dinamik Senyawa uji 11



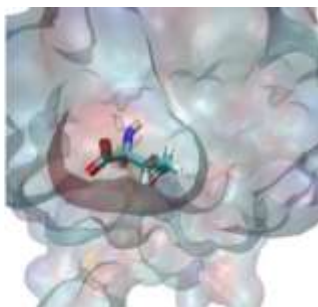
(0 nanodetik)



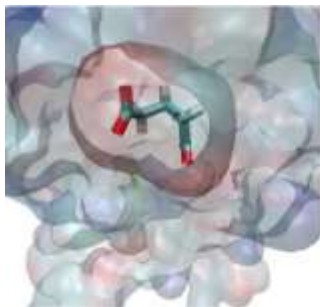
(10 nanodetik)



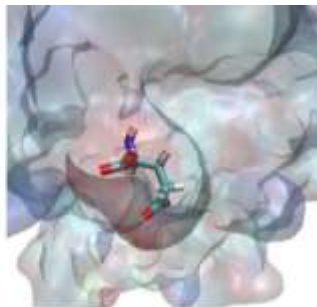
(20 nanodetik)



(30 nanodetik)

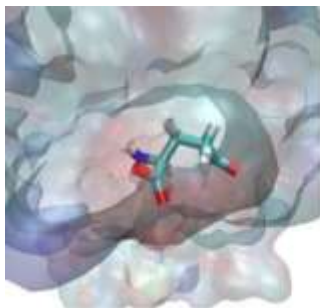


(40 nanodetik)

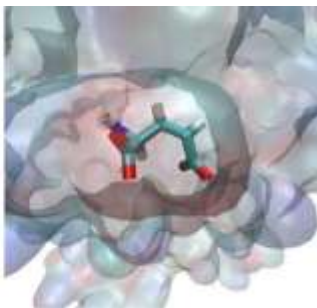


(50 nanodetik)

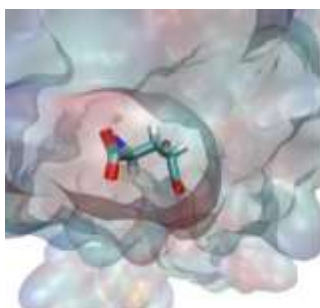
Lampiran 2. 5 Visualisasi Molekular Dinamik Senyawa uji 7



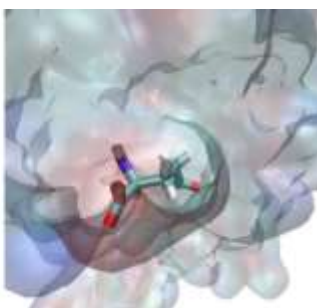
(0 nanodetik)



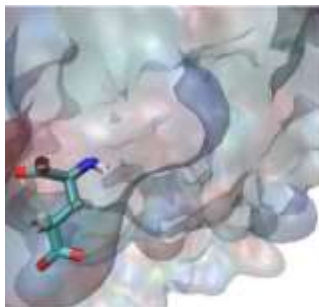
(10 nanodetik)



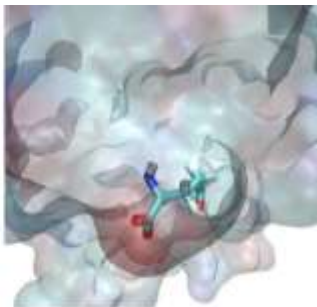
(20 nanodetik)



(30 nanodetik)

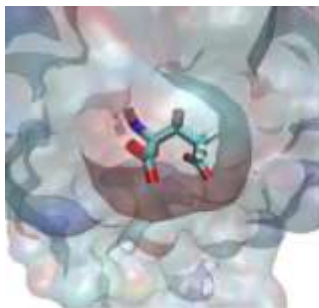


(40 nanodetik)

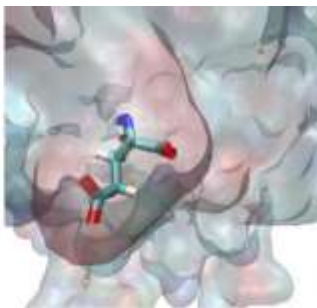


(50 nanodetik)

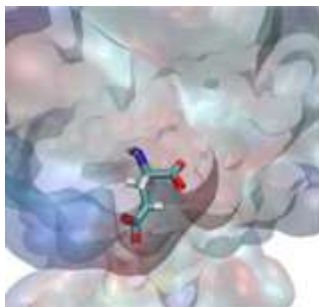
Lampiran 2. 6 Visualisasi Molekular Dinamik Senyawa uji 9



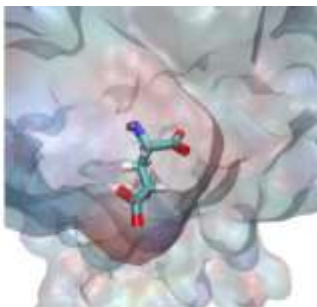
(0 nanodetik)



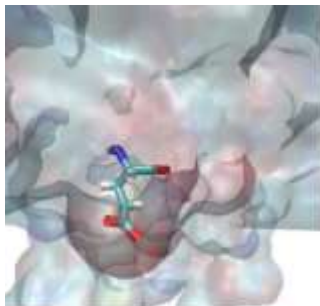
(10 nanodetik)



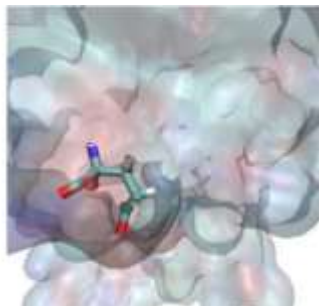
(20 nanodetik)



(30 nanodetik)



(40 nanodetik)



(50 nanodetik)