

Herni JAPS_PUBLISHED_HERNI

by R Herni Kusriani

Submission date: 01-Sep-2021 09:03PM (UTC-0500)

Submission ID: 1639806877

File name: 3341_pdf_JAPS_PUBLISHED_HERNI.pdf (1.12M)

Word count: 4603

Character count: 24216



Cytotoxicity of Quercetin and Quercetin-3-O-rhamnoside of *Etilingera elatior* (Jack) R.M.Sm. leaves against HeLa Cervical Cancer Cells

Kusriani Herni^{1,2}, Anas Subarnas^{1*}, Ajeng Diantini¹, Yoppi Iskandar¹

¹Faculty of Pharmacy, Padjadjaran University, Sumedang, Indonesia

²Faculty of Pharmacy, Bhakti Kencana University, Bandung, Indonesia

ARTICLE INFO

Received on: 11/09/2020
Accepted on: 23/12/2020
Available online: 05/05/2021

Key words:

Etilingera elatior (Jack)
R.M.Sm., HeLa cell,
quercetin, quercetin-3-O-
rhamnoside.

ABSTRACT

Etilingera elatior traditionally used for therapeutic purposes. Pharmacological activities of this plant have been reported, one of which is cytotoxic activity. This study aims to isolate cytotoxic compounds against HeLa cervical cancer cell lines from an ethanol extract of the *E. elatior* leaves. The isolation work was conducted by means of column chromatography and determination of the molecular structure was by spectroscopic data analysis. The cytotoxicity was determined by the 3-(4,5-dimethylthiazol-2-yl)-2,5-diphenyltetrazolium bromide (MTT) method. The results of this study were two isolated compounds identified as quercetin and quercetin-3-O-rhamnoside from the ethyl acetate fraction. These two compounds had cytotoxic activity on HeLa cervical cancer cells which was indicated by the inhibition of cell proliferation with IC₅₀ values were 29.49 and 46.67 µg/mL, respectively. In the migration assay, quercetin and quercetin-3-O-rhamnoside inhibited migration of the HeLa cells significantly at 10 µg/mL as compared with the control, in 24 and 48 hr experiments. This study reinforces the previous evidence of the potential of quercetin and quercetin-3-O-rhamnoside as an anticancer drug candidate.

INTRODUCTION

Etilingera elatior (torch ginger) is a species of the Zingiberaceae, and is an edible native Indonesian plant, Malaysia, and other countries in Southeast Asia (Chan *et al.*, 2011; Lachumy *et al.*, 2010). Its flowers are commonly used as spices for food and vegetable, and also used for medicinal purposes (Chan *et al.*, 2007; Lachumy *et al.*, 2010; Shahid and Basher, 2019). Its leaves are usually applied topically as antiseptics to clean wounds (Ibrahim and Setyowati, 1999) and used in a mixture with other fragrant herbs to deal with body odor (Chan *et al.*, 2007). Torch ginger leaves also has been reported to contain flavonoid, tannin, triterpenoid, saponin, and carbohydrates (Lachumy *et al.*, 2010). The flavonoid compounds in *E. elatior* were identified as quercetin, apigenin, kaempferol, luteolin, and myricetin (Ghasemzadeh *et al.*, 2015) and the main content of essential oil consist of β-pinene,

dodecene, and sesquiterpenes of β-farnesene, and caryophyllene (Abdelwahab *et al.*, 2010; Chan *et al.*, 2010).

Several studies on pharmacological activities of *E. elatior* have reported that this species has various kinds of activities, including antibacterial, antioxidant, antifungal, tyrosinase inhibition, hepatoprotector, and cytotoxic activity (Chan *et al.*, 2011; Ghasemzadeh *et al.*, 2015; Kusriani *et al.*, 2017). The rhizome of this plant can inhibit tumor growth in the Epstein-Barr virus early antigen test; flower extracts showed antiproliferative activity against breast cancer cells, and leaf extracts showed an antioxidant and cytotoxic activity on HeLa cells (Habsah *et al.*, 2005; Lachumy *et al.*, 2010; Shaikh *et al.*, 2016)

Our study on *E. elatior* has successfully isolated and identified quercetin and quercetin-3-O-rhamnoside (quercitrin). Evidence is available concerning the cytotoxicity of quercetin on various kinds of cancer cells, such as cervical, breast, lung, colorectal, prostate, and nasopharyngeal cancer (Shafabakhsh and Asemi, 2019). However, reports on their cytotoxicity on cervical cancer cells are limited. In this study, we evaluated quercetin and quercetin-3-O-rhamnoside for their cytotoxicity against cervical cancer cells and their effect on cell migration.

*Corresponding Author

Anas Subarnas, Faculty of Pharmacy, Padjadjaran University, Sumedang, Indonesia, E-mail: aasubarnas@yahoo.co.id

MATERIALS AND METHODS

General procedures

UV spectra were measured using Shimadzu spectrophotometer UV 1,800 (Kyoto, Japan). The IR spectrum was analyzed with the IR Spectrometer instrument by PerkinElmer® (Waltham, MA). Nuclear Magnetic Resonance (NMR) spectra were analyzed with the Agilent® DD2 series console spectrophotometer at 500 (1H) and 125 (13C) MHz using acetone as the solvent. The column chromatography process was carried out with silica gel 60 (70–230 Mesh ASTM; Merck, Darmstadt, Germany) as a stationary phase. Thin-layer chromatography was performed on precoated silica gel 60 PF₂₅₄ plates (Merck, Darmstadt, Germany). A universal spray reagent, sulfuric acid 10%, was used to detect the chromatogram. All solvents for the separation process are technical solvents which have been previously distilled off.

Plant materials

Etilingera elatior (Jack) R.M.Sm. leaves were collected from local gardens in Bandung, West Java, Indonesia. The plant was authenticated in the herbarium of the Department of Biology, Padjadjaran University, Indonesia. Leaves were cleaned under running water, sliced to reduce the sample size, and oven-dried at 40°C until a constant weight.

Chemicals and reagents

Roswell Park Memorial Institute 1,640 medium (cat no. 11875093), fetal bovine serum (FBS) (cat no. 10270106), dimethyl sulfoxide (DMSO) (cat no. D8418), and 3-(4,5-dimethylthiazol-2-yl)-2,5 diphenyl tetrazolium bromide (MTT) (cat. no. M2128) were purchased from Sigma-Aldrich, St. Louis, MO. Doxorubicin was provided by the Laboratory of Cell Culture and Cytogenetic, Faculty of Medicine, University of Padjadjaran, Indonesia. All chemical reagents were of analytical grade.

Cell culture and conditions

HeLa cell lines (human cervix carcinoma) were used to investigate the cytotoxic activity of leaves extract, fractions, and isolate of the *E. elatior* leaves. HeLa cells were cultured in Roswell Park Memorial Institute (RPMI) as a medium (pH 7.4), which was added to 10% FBS, penicillin (100 U/ml), and streptomycin sulfate (100 mg/ml). All experiments were conducted in triplicate at the Laboratory of Cell Culture and Cytogenetic of the Faculty of Medicine, University of Padjadjaran, Indonesia.

Extraction and isolation

The powders of the *E. elatior* leaves (2,000 g) were extracted with ethanol 70% (3x, each 24 hours) by the maceration method. The extract was concentrated using a rotary evaporator at 60°C to produce a concentrated extract (570 g), and the concentrated extract was fractionated with a mixture of water : hexane (3:1) to produce a layer of hexane and water. The water layer was then repartitioned with etOAc to produce an etOAc and H₂O layer, and finally, the H₂O layer was partitioned with buOH to produce buOH and aqueous layers. The four layers were evaporated to produce an n-hexane fraction (3.16 g), etOAc fraction (106.6 g), buOH fraction (116.83 g), and H₂O fraction (248.92 g). The extract and all fractions were tested for cytotoxic

activity against HeLa cell lines by MTT test. Among the four fractions, the ethyl acetate exhibited the highest cytotoxicity, so further work was focused on the ethyl acetate fraction to isolate active compounds. Subsequently, the ethyl acetate fraction was then separated again by column chromatography with silica gel and eluted with a mixture of n-hexane and ethyl acetate with various ratios to increase polarity (n-hexane to ethyl acetate, 9:1, 8:2, 7:3, 6:4, and 5:5), resulting in several subfractions. Fraction 2 of the nine fractions was repeatedly column chromatographed with silica gel and the eluent of the chloroform methanol–water mixtures to result in a pure compound 1 (103 mg). Fraction 6 was carried out by column chromatography with silica gel and eluted with CHCl₃: MeOH (9:1) to produce one isolate, which was purified into pure compound 2 (30 mg). The two compounds were identified by spectral UV, IR, MS, and 1H and 13C NMR data.

Cytotoxicity examination in MTT assay

The cytotoxicity of the extract, fractions, and compounds that have been isolated against cells of HeLa cervical cancer was tested by the MTT assay (Mosmann, 1983). The 3,000 cells per well were seeded in a 96-well microtiter with 100 µL RPMI medium. Next, cells were incubated for 24 hours at 37°C under 5% CO₂ in a humid atmosphere. Then, the RPMI media were discarded and fresh media containing extracts and fractions with different doses were added. After an incubation period, the media were removed. To each well, 20 µL of MTT (5 mg/ml pH 4.7) was added and then incubated again for 4 hours. The supernatant liquid was removed. 100 µL of DMSO as a stopper reaction was added and shaken for 15 minutes. The absorbance was measured at 550 nm using a plate reader (Thermo Scientific® Multiscan EX, Singapore). All experiments were carried out in triplicate. The absorbance of cells without a sample is considered to be 100%. The 50% inhibition concentration (IC₅₀) was determined by a graph.

Migration assay

Cell migration was observed with a 24-well Transwell plate system (Costar, Corning, USA) in the scratch/wound-healing assay in HeLa cell lines. HeLa cells were grown in 24-well plates and were treated or untreated with quercetin, quercetin 3-O rhamnoside, and doxorubicin (a positive control) in the complete medium and then placed in the incubator. After 24 hours of incubation, gaps were introduced with a P10 pipette tip by gently scraping the monolayer. After scraping, to remove debris, cells were washed with Phosphate Buffered Saline thrice. Cells that have been given the gap were incubated for 0, 24, and 48 hours at 37°C (5% CO₂) (Cory, 2011). The treatments were observed with a microscope linked to a computer and ToupView software (version x64, 3.7.7892) and documented as TIFF, and gap areas were measured with ImageJ (NIH). The experiments were carried out in triplicate (Schneider *et al.*, 2012).

RESULTS AND DISCUSSION

Cytotoxicity of *E. elatior* leaves

The extract and fractions of the *E. elatior* leaves were tested for their 24 hours effects against HeLa cancer cell lines using the MTT bioassay; results are shown in Figure 1. IC₅₀ values of all samples are presented in Table 1. Among all the samples tested, the extract had the strongest inhibition against the HeLa cell lines

proliferation, followed by ethyl acetate, butanol, n-hexane, and water fractions with IC_{50} of 127.98, 156.47, 225.68, 312.47, and 561.58 $\mu\text{g/ml}$, respectively. A further study was conducted on the ethyl acetate fraction to explore active compounds responsible for their cytotoxicity.

Identification of Compound 1 and Compound 2

The ethyl acetate fraction which had cytotoxicity against the HeLa cell lines in the MTT assay was subjected to repeated column chromatography and two compounds, compounds **1** and **2**, were isolated. Both compounds were identified in their spectral data.

Compound 1

Compound **1** was the crystal of yellow color with a melting point variously reported of 309–314°C and showed a molecular ion peak at m/z 303.05 with Electron Ionization-Mass Spectrometry. The MS and NMR data indicated that the molecular formula of compound **1** is $C_{15}H_{10}O_7$.

Two maximum absorption peaks of the UV spectrum were shown at a wavelength of 363 nm and 282 nm. It is specific for flavonol spectrum from flavonoids (Mabry *et al.*, 1970). The IR spectrum showed the presence of hydroxyl (3,450, 3,255, 1,400, and 1,320 cm^{-1}), carbonyl (1,606 cm^{-1}), alkene (1,562 cm^{-1}), and aromatic (1,458 cm^{-1}) groups in the molecule.

The ^1H NMR data of the compound **1** revealed five aromatic proton signals at δ 6.26 (1H, d, $J=2.0$ Hz), 6.51 (1H, d, J

= 2.0 Hz), δ 7.00 (1H, d, $J=8.5$ Hz), 7.70 (1H, dd, $J=8.5; 2.0$ Hz), and 7.82 (1H, d, $J=2.0$ Hz), which showed that this compound has 1,3,4-tri- and 1,2,3,5-tetrasubstitutes in benzene. There are two doublet signals at δ 6.26 and 6.51 and their characteristics were derived from H-6 and H-8 of a flavonol containing a 5,7-dihydroxy substitution pattern of the A ring, whereas the signals appearing at δ 7.00, 7.70, and 7.82 were assumed to be attributed to H-5', H-6', and H-2', respectively, of the B-ring of the flavonol. Furthermore, a downfield peak at δ 12.16 (1H, s) was a characteristic signal of the hydroxyl proton of C-5. These ^1H NMR spectral data suggested that compound **1** was quercetin. This assumption was supported by the ^{13}C NMR spectra, which indicates the presence of 15 signals consisting of 14 signals at δ 94.45–164.98 ppm of aromatic carbons of benzene rings and one signal derived from a carbonyl carbon at δ 176.55 ppm. Comparison of all NMR spectral data with the reported evidence (Aisyah *et al.*, 2017) confirmed that compound **1** is quercetin (Fig. 2).

Compound 2

Compound **2** was a yellow amorphous powder. The molecular ion peak was at m/z 471.08 [M+Na]. This molecular ion peak together with the number of hydrogens and carbons in ^1H and ^{13}C NMR data indicated that the molecular formula of this compound was $C_{21}H_{20}O_{11}$. Its UV spectrum showed strong absorbance at 350 and 256 nm. These absorbance values are

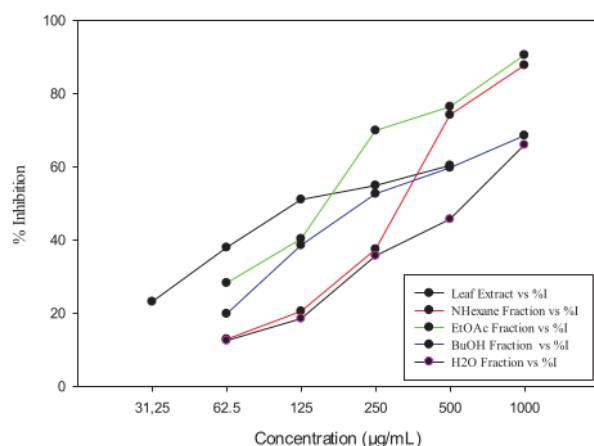


Figure 1. Inhibition of ethanol extract and fractions of *E. elatior* leaves against HeLa cancer cells.

Table 1. IC_{50} of extract and fractions of *E. elatior* leaves against HeLa cell lines.

Samples	IC_{50} ($\mu\text{g/ml}^{-1}$) ^a
Extract	127.98 ± 2.83
n-Hexane fraction	312.47 ± 4.01
EtOAc fraction	156.47 ± 4.12
Butanol fraction	225.68 ± 2.74
Water fraction	561.58 ± 3.08

IC_{50} values were analyzed with SigmaPlot ver. 12 and a four-parameter logistic model.

^aData are presented as mean ± SD of triplicate.

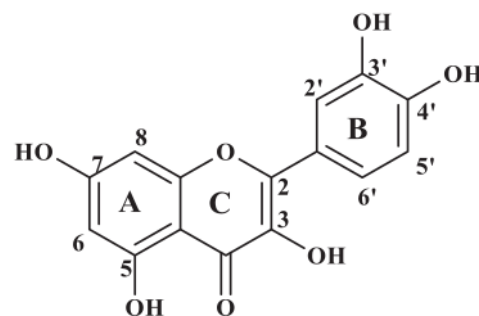


Figure 2. Quercetin.

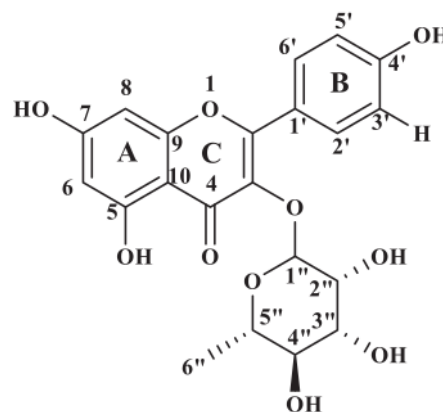


Figure 3. Quercetin-3-O-rhamnoside.

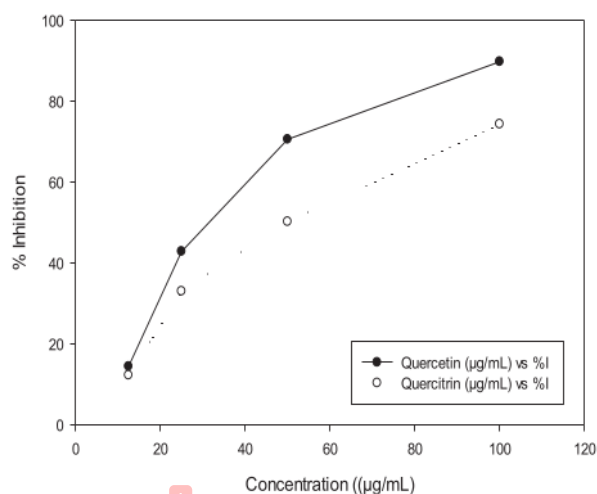


Figure 4. Inhibition of quercetin and quercitrin of *E. elatior* against HeLa cancer cells.

Table 2. IC₅₀ of quercetin and quercitrin of *E. elatior* leaves against HeLa cell lines.

Samples	IC ₅₀ (µg/ml) ^a
Quercetin	29.49 ± 1.35
Quercitrin	46.67 ± 1.97

IC₅₀ of each sample was analyzed with SigmaPlot ver. 12 and a four-parameter logistic model.

^aData are presented as mean ± SD of triplicate.

characteristic of a flavonol skeleton glycosylated at the 3-hydroxyl group. The infrared spectrum showed the presence of the functional groups of hydroxyl (3,271 cm⁻¹), carbonyl (1,652 cm⁻¹), alkene (1,556 cm⁻¹), and aromatic ring (1,456 cm⁻¹).

¹H NMR spectra of compound **2** showed coupling patterns similar to compound **1**. Aromatic proton signals appearing at δ 6.40 (1H, *d*, *J* = 2.0 Hz) and 6.50 (1H, *d*, *J* = 2.0 Hz) were derived from H-6 and H-8 of a flavonol with the 5,7-dihydroxy substitution, whereas those at δ 6.9 (1H, *d*), 7.30 (1H, *dd*, *J* = 8.4; 2.1 Hz), and 7.48 (1H, *d*, *J* = 2.1 Hz) were, respectively, generated from H-5', H-6', and H-2' of the B-ring. The characteristic signal of hydroxyl proton at C-5 is a downfield peak at δ 12.68 (1H, *s*). In this ¹H NMR spectrum, the anomeric proton signal was shown at δ 5.47 (1H, *d*, *J* = 1.2) along with four proton signals of oxygenated methines at δ 3.00–4.35 ppm and one methyl proton signal at δ 0.90 (3H, *s*). These proton signals were derived from a sugar moiety, the sugar of which was supposed to be rhamnose, and this assumption was supported by the ¹³C NMR data which showed five oxygenated methine carbons at δ 102.80, 72.94, 72.02, 71.44, and 71.32 and one methyl carbon at δ 17.73. In addition, the ¹³C NMR spectrum showed 14 signals at δ 99.50–163.07 ppm of aromatic carbons of benzene rings and one signal derived from a carbonyl carbon at δ 179.20 ppm. Hence, this compound was assumed to be quercetin-3-O-rhamnoside or quercitrin (Fig. 3), confirmed by comparison with previously reported NMR spectral data (Utari *et al.*, 2019)

Cytotoxicity of quercetin and quercetin-3-O-rhamnoside against HeLa cancer cell lines

Quercetin and quercetin-3-O-rhamnoside (quercitrin) were examined for cytotoxicity effects on HeLa cancer cells with

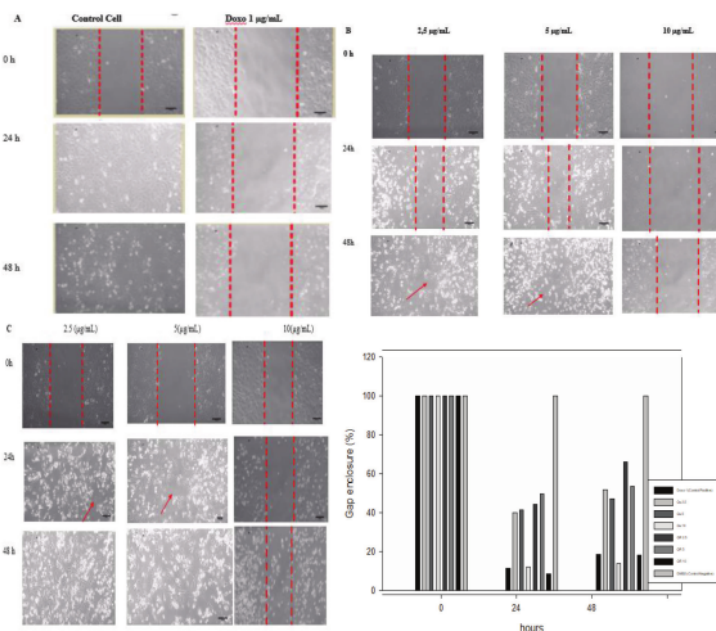


Figure 5. Effect of doxorubicin (A), quercetin (B), and quercetin 3-O-rhamnoside (C) on cell migration in HeLa cell lines. Figures A, B, and C are representative migration photographs of HeLa cells with doxorubicin (A), quercetin (B), and quercetin 3-O-rhamnoside (C). HeLa cells were untreated and treated samples for 24 and 48 h. Quantification gap enclosure (% area) of HeLa cells (D). The values are presented as mean ± SD (*n* = 3), *p* < 0.05 to control.

MTT bioassay in a 24-hours examination (Fig. 4) and the IC_{50} value is shown in Table 2. Figure 4 shows that both quercetin and quercitrin can inhibit the growth of HeLa cells at certain doses, which demonstrated that IC_{50} values were, respectively, 29.49 and 46.67 $\mu\text{g/ml}$.

Inhibitory effect of quercetin and quercetin-3-O-rhamnoside on cell migration

Quercetin (2.5, 5.0, and 10.0 $\mu\text{g/ml}$), quercetin 3-O-rhamnoside (10.0, 15.0, and 20.0 $\mu\text{g/ml}$), and doxorubicin (1.0 $\mu\text{g/ml}$) were evaluated after 24 and 48 hours incubations for their effects on cell migration of the HeLa cell lines by a wound-healing assay (Fig. 5). All samples tested showed the inhibition of cell migration at 24- and 48-hours experiments, but in the 48 hours, their effects were decreased. Quercetin and quercetin 3-O-rhamnoside showed concentration-dependent inhibitory effects and the significant effect ($p < 0.05$) was shown by the concentration of 10.0 $\mu\text{g/ml}$.

DISCUSSION

Quercetin and quercetin-3-O-rhamnoside are flavonoid compounds derived from nature and are widely found in daily foods. In this study, these isolated compounds from the *E. elatior* leaves by a means of cytotoxicity bioassay-guided fractionation and their molecular structures were determined from their spectroscopic data. Their cytotoxicity in HeLa cervical cancer cells were evaluated along with its inhibitory effect on cell migration. The isolation of quercetin and quercetin-3-O-rhamnoside from the *E. elatior* leaves and evaluation of their cytotoxic activity were reported for the first time.

Quercetin and quercetin-3-O-rhamnoside showed cytotoxic activity in a concentration-dependent manner against HeLa cell lines, which was indicated by their inhibition of cell proliferation as shown in Table 2. These two compounds had higher inhibitory activity against cell proliferation as compared to the active extract and ethyl acetate fraction (Table 1). This may be due to the fact that the extract and the ethyl acetate fraction contain diverse compounds of nonspecific chemical substances that may interact with each other and decrease the activity. Quercetin decreased cell viability with the IC_{50} value of 29.49 $\mu\text{g/ml}$ lower than that of quercetin-3-O-rhamnoside (46.67 $\mu\text{g/ml}$), revealing that quercetin had more potent cytotoxicity against cervical cancer cells. Quercetin as an aglycone which has higher lipophilic properties than quercetin-3-O-rhamnoside would be easier to penetrate the cell membrane, causing it higher cytotoxicity against cells.

It has been reported that quercetin can inhibit HeLa cell growth and induce apoptosis by influencing the cell cycle in the G0/G1 phase, downregulating the expression of bcl-2, PI3K, and p-Akt, upregulating Bax, increasing the action of caspases (Rauf *et al.*, 2018), and suppressing cell viability with the initiation of the cell cycle arrest G2/M phase and apoptosis through a p53-dependent mechanism (Priyadarsini *et al.*, 2010).

Anticancer agents generally not only suppress the cancer cell growth but may also inhibit cell metastases. The inhibition activity of cancer cells in migration plays an important role in cancer development and progression. The inhibition of cell migration to the formation of a wound or gap was examined with scratch wound assay (Cory, 2011). In this study, quercetin

and quercetin-3-O-rhamnoside evaluated for their inhibition on the migration of the HeLa cancer cell lines inhibited migration of the cells significantly at the concentration of 10 $\mu\text{g/ml}$ when compared to controls, in the 24- and 48-hours experiments. The increasing concentrations increased their inhibitory effects, while the longer the incubation time, their effects were decreased. Quercetin has been reported to inhibit cell migration and invasion of several cancer cells, such as glioblastoma cells (Levesque *et al.*, 2012), oral cancer cells (Lai *et al.*, 2013), melanoma cells (Cao *et al.*, 2015), breast cancer (Li *et al.*, 2017), and hepatocellular carcinoma (Lu *et al.*, 2018). Inhibition of cell migration and invasion is caused by inhibition of MMP-2/MMP-9 (Lai *et al.*, 2013) through the signal transduction pathway on PI3K/Akt (Lu *et al.*, 2018). One of the matrix metalloproteinase (MMP) families is MMP-2/MMP-9 metalloproteinase (MMP), which plays a role in migration, invasion, and metastasis in various types of cancer (Lu *et al.*, 2018). Hence, quercetin and quercetin-3-O-rhamnoside may have potential as cancer drug candidates that could be able to prevent the spread of cancer cells in the body.

CONCLUSION

Our research provided findings that quercetin and quercetin-3-O-rhamnoside isolated from the *E. elatior* leaves showed cytotoxic activity and inhibited cell migration against the HeLa cells line. These findings support previous evidence that quercetin and its derivative has the potential for therapeutic application in cancer treatment, including cervical cancer treatment.

ACKNOWLEDGMENTS

Authors are thank to Bhakti Kencana University for providing financial assistance and Padjadjaran University for supporting this reseach. And thanks to Dr. Ahmad Faried, MD., SPBS., PhD., Dr. med. Hasan Bashari, dr., M.Kes., Tenny Putri Wikayani, S.ST and Nurul Qomarilla, SKM. for providing and handling HeLa cell lines in the Cell Culture and Cytogenic Laboratory, Faculty of Medicine, Padjadjaran University.

AUTHOR CONTRIBUTIONS

All authors made substantial contributions to conception and design, acquisition of data, or analysis and interpretation of data; took part in drafting the article or revising it critically for important intellectual content; agreed to submit to the current journal; gave final approval of the version to be published; and agree to be accountable for all aspects of the work. All the authors are eligible to be an author as per the international committee of medical journal editors (ICMJE) requirements/guidelines.

FUNDING

There is no funding to report.

CONFLICTS OF INTEREST

The authors report no financial or any other conflicts of interest in this work.

ETHICAL APPROVALS

This study does not involve experiments on animals or human subjects.

PUBLISHER'S NOTE

This journal remains neutral with regard to jurisdictional claims in published institutional affiliation.

REFERENCES

- Abdelwahab SI, Zaman FQ, Mariod AA, Yaacob M, Abdelmageed AHA, Khamis S. Chemical composition, antioxidant and antibacterial properties of the essential oils of *Etilingera elatior* and *Cinnamomum pubescens Kochummen*. *J Sci Food Agric*. 2010; 90(15):2682–8.
- Aisyah LS, Yun YF, Herlina T, Julaeha E, Zainuddin A, Nurfarida I, Hidayat T, Supratman U, Shiono Y. Flavonoid compounds from the leaves of *Kalanchoe prolifera* and their cytotoxic activity against P-388 Murine Leukaemia Cells. *Nat Prod Sci*, 2017; 23(2):139–45.
- Cao HH, Cheng CY, Su T, Fu XQ, Guo H, Li T, Kai-Wing Tse A, Kwan HY, Yu H, Yu ZL. Quercetin inhibits HGF/c-Met signaling and HGF-stimulated melanoma cell migration and invasion. *Mol Cancer*, 2015; 14: 103.
- Chan EWC, Lim YY, Nor Azah MA. Composition and antibacterial activity of essential oils from leaves of *Etilingera* species (*Zingiberaceae*). *Int J Adv Sci Art*, 2010; 1(2):1–12.
- Chan EWC, Lim YY, Omar M. Antioxidant and antibacterial activity of leaves of *Etilingera* species (*Zingiberaceae*) in peninsular Malaysia. *Food Chem*, 2007; 104:1586–93.
- Chan EWC, Lim YY, Wong SK. Phytochemistry and pharmacological properties of *Etilingera elatior*: a review. *Pharmacogn J*, 2011; 3(22):6–10.
- Cory G. Scratch-wound assay. In: Wells C, Parsons M. (eds.). *Cell migration. Methods in molecular biology (methods and protocols)*. Totowa, NJ: Humana Press, p 769, 2011.
- Ghasemzadeh A, Jaafar HZE, Rahmat A, Ashkani S. Secondary metabolites constituents and antioxidant, anticancer and antibacterial activities of *Etilingera elatior* (Jack) R. M. Sm grown in different locations of Malaysia. *Int Soc Complement Med Res*, 2015; 15:335.
- Habsah M, Lajis NH, Sukari MA, Yap YH, Kikuzaki H, Nakatani N. Antitumor-promoting and cytotoxic constituents of *Etilingera elatior*. *Malays J Med Sci*, 2005; 12(1) 6–12.
- Ibrahim H, Setyowati FM. *Etilingera*. In: de Guzman CC, Siemonsma JS (eds.). *Plant resources of South-East Asia*. Pudoc, Wageningen, Netherlands, pp 123–6, 1999.
- Kusriani H, Subarnas A, Diantini A, Iskandar Y, Marpaung S, Juliana M, Silalahi F. Antioxidant and cytotoxic activities, total phenolic content of leaf, flower, and rhizome extract of torch ginger (*Etilingera elatior*). *Pharmacy* 2017;14(01):51–63.
- Lachumy SJT, Sasidharan S, Sumathy V, Zuraini Z. Pharmacological activity, phytochemical analysis and toxicity of methanol extract of *Etilingera elatior* (torch ginger) flowers. *Asian Pac J Trop Med*, 2010; 3(10):769–74.
- Lai WW, Hsu SC, Chueh FS, Chen YY, Lin JP, Lien JC, Tsai CH, Chung JG. Quercetin inhibits migration and invasion of SAS human oral cancer cells through inhibition of NF-kappaB and matrix metalloproteinase-2/-9 signaling pathways. *Anticancer Res*, 2013; 33:1941–50.
- Levesque JM, Bousquet-Gagnon N, Beliveau R. Quercetin abrogates IL-6/STAT3 signaling and inhibits glioblastoma cell line growth and migration. *Exp Cell Res*, 2012; 318:925–35.
- Li J, Zhang J, Wang Y, Liang X, Wusiman Z, Yin Y, Shen Q. Synergistic inhibition of migration and invasion of breast cancer cells by dual docetaxel/quercetin-loaded nanoparticles via Akt/MMP-9 pathway. *Int J Pharm*, 2017; 523:300–9.
- Lu J, Wang Z, Li S, Xin Q, Yuan M, Li H, Song X, Gao H, Pervaiz N, Sun X, Lu W, Jing T, Zhu Y. Quercetin inhibits the migration and invasion of HCCLM3 cells by suppressing the expression of p-Akt1, matrix metalloproteinase (MMP) MMP-2, and MMP-9. *Med Sci Monit*, 2018; 24:2583–9.
- Mabry T, Markham KR, Thomas MB. *The Systematic identification of flavonoids*. New York, NY: Springer-Verlag Berlin Heidelberg, 1970; doi: 10.1007/978-3-642-88458-0
- Mosmann T. Rapid colorimetric assay for cellular growth and survival: application to proliferation and cytotoxicity assays. *J Immunol Methods*, 1983; 65(1–2):55–63.
- Priyadarsini RV, Murugan RS, Maitreyi S, Ramalingam K, Karunakaran D, Nagini S. The flavonoid quercetin induces cell cycle arrest and mitochondria-mediated apoptosis in human cervical cancer (HeLa) cells through p53 induction and NF-κB inhibition. *Eur J Pharmacol*, 2010; 649:84–91.
- Rauf A, Imran M, Khan IA, Rehman MU, Gilani SA, Mehmood Z, Mubarak MS. Review: Anticancer potential of quercetin: A comprehensive review. *Phytotherapy Research* 2018; 32(11):2109–30.
- Schneider CA, Rasband WS, Eliceiri KW. NIH image to imageJ: 25 years of image analysis. *Nat Methods*, 2012; 9(7):671–5.
- Shafabakhsh R and Asemi Z. Quercetin: A natural compound for ovarian cancer treatment. *Journal of Ovarian Research* 2019;12(55):1–9.
- Shahid Ud Daula AFM, Basher MA. Genus *etlingera* - a review on chemical composition and antimicrobial activity of essential oil. *Acad J*, 2019; 13(7):135–56.
- Shaikh AM, Shrivastava B, Apte KG, Navale SD. Medicinal plants as potential source of anticancer agents: a review. *J Pharmacogn Phytochem*, 2016; 5(2):291–5.
- Utari F, Itam A, Syafrizayanti S, Putri WH, Ninomiya M, Koketsu M, Tanaka K, Efdi M. Isolation of flavonol rhamnosides from *Pometia pinnata* leaves and investigation of α-glucosidase inhibitory activity of flavonol derivatives. *J Appl Pharm Sci*, 2019; 9(08):053–65.

How to cite this article:

Herni K, Subarnas A, Diantini A, Iskandar Y. Cytotoxicity of quercetin and quercetin-3-O-rhamnoside of *Etilingera elatior* (Jack) R.M.Sm. leaves against HeLa cervical cancer cells. *J Appl Biol Biotech* 2021; 11(05):085–090.

Herni JAPS_PUBLISHED_HERNI

ORIGINALITY REPORT

14%

SIMILARITY INDEX

13%

INTERNET SOURCES

14%

PUBLICATIONS

6%

STUDENT PAPERS

PRIMARY SOURCES

1	www.japsonline.com Internet Source	5%
2	www.ncbi.nlm.nih.gov Internet Source	2%
3	www.spandidos-publications.com Internet Source	1%
4	www.scribd.com Internet Source	1%
5	T. K. Lim. "Edible Medicinal And Non Medicinal Plants", Springer Science and Business Media LLC, 2012 Publication	1%
6	www.sciencepub.net Internet Source	1%
7	patentscope.wipo.int Internet Source	1%
8	Chan Eric Wei Chiang, Ng Ying Ki, Tan Chia Yee, Alessandro Larsen, Wong Siu Kuin, Chan Hung Tuck. "Diosmetin and tamarixetin	1%

(methylated flavonoids): A review on their chemistry, sources, pharmacology, and anticancer properties", Journal of Applied Pharmaceutical Science, 2021

Publication

9

Hitoshi Tanaka. "A new Erythrina alkaloid from Erythrina herbacea", Journal of Natural Medicines, 04/2008

Publication

1 %

10

Hyun Jeong An, Eun Hee Kim, Hyoung Jae Lee, Jeong-Yong Cho, Jae-Hak Moon. "New caryophyllene-type sesquiterpene and flavonol tetraglycoside with sixteen known compounds from sword bean (*Canavalia gladiata*)", Food Science and Biotechnology, 2020

Publication

1 %

11

Dong Sheng Ming. "Isolation and Characterization of Compounds with Anti-prostate Cancer Activity from *Arctium lappa* L. Using Bioactivity-guided Fractionation", Pharmaceutical Biology (Formerly International Journal of Pharmacognosy), 2/1/2004

Publication

1 %

Exclude bibliography On

Herni JAPS_PUBLISHED_HERNI

GRADEMARK REPORT

FINAL GRADE

/123

GENERAL COMMENTS

Instructor

PAGE 1

PAGE 2

PAGE 3

PAGE 4

PAGE 5

PAGE 6
